

## \$175,000 - 1342 8882 170 Street, Edmonton

MLS® #E4414649

**\$175,000**

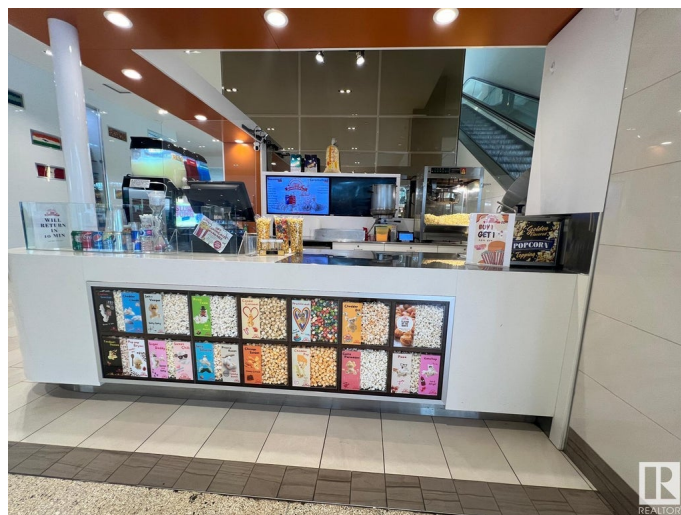
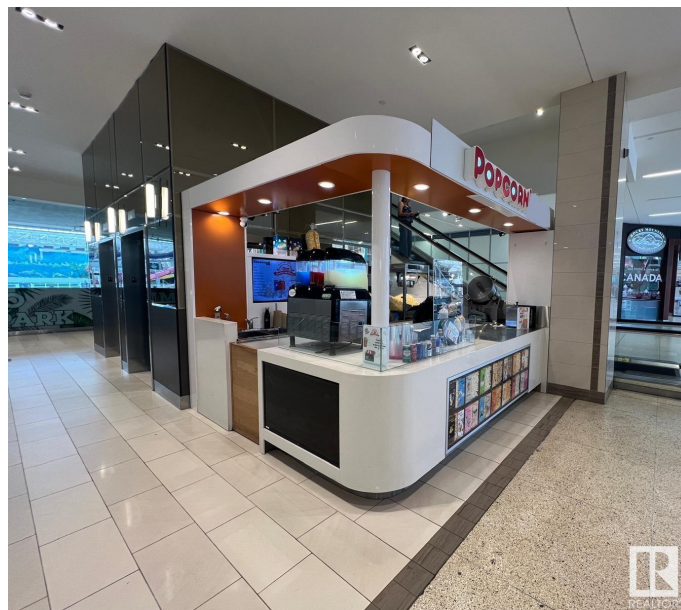
0 Bedroom, 0.00 Bathroom,  
Business on 0.00 Acres

Summerlea, Edmonton, AB

Own a thriving business in one of North America's most visited shopping destinations! Located at the entrance to the Waterpark & across Sea Lion Show, this Popcorn Store benefits from high foot traffic and exposure to shoppers, tourists, and families. With a loyal customer base, the store offers fresh, gourmet popcorn in a variety of flavors, making it a popular snack spot. The business is a turnkey operation, fully equipped with popcorn machines, display units, Slush machine, inventory and trained staff. It offers high-profit potential with opportunities for growth through online sales, events, and seasonal promotions. The flexible business model allows you to maintain the current concept, introduce new flavors, and create promotions. This is a rare opportunity to own a business in West Edmonton Mall, with great hours, low overhead and strong growth potential. Whether you're an experienced business owner or a new entrepreneur, this profitable popcorn business is a great investment!

### Essential Information

MLS® #	E4414649
Price	\$175,000
Bathrooms	0.00



Acres	0.00
Type	Business
Status	Active

**Community Information**

Address	1342 8882 170 Street
Area	Edmonton
Subdivision	Summerlea
City	Edmonton
County	ALBERTA
Province	AB
Postal Code	T5T 4J2

**Additional Information**

Date Listed	November 26th, 2024
Days on Market	156
Zoning	Zone 20

DATA IS DEEMED RELIABLE BUT IS NOT GUARANTEED ACCURATE BY THE REALTORS® ASSOCIATION OF EDMONTON. COPYRIGHT 2025 BY THE REALTORS® ASSOCIATION OF EDMONTON. ALL RIGHTS RESERVED.Trademarks are owned or controlled by the Canadian Real Estate Association (CREA) and identify real estate professionals who are members of CREA (REALTOR®, REALTORS®) and/or the quality of services they provide (MLS®, Multiple Listing Service®)

Listing information last updated on May 1st, 2025 at 8:47am MDT