

\$12,500 - 8908 140 Street, Edmonton

MLS® #E4415249

\$12,500

5 Bedroom, 6.00 Bathroom, 3,589 sqft

Rental on 0.00 Acres

Parkview, Edmonton, AB

Welcome to this one-of-a-kind, custom luxury infill home with a garden suite in the prestigious and highly sought-after Parkview neighbourhood (valleyview side) This stunning, sleek, modern & open-concept home was built with all premium/top-notch materials & finished w advance technologies & 5 mins walk to the river valley. Upon entering the grand double door entry, you are greeted by the spacious and inviting bright main floor with sweeping floor-to-ceiling Italian windows that offer abundance of natural lighting throughout the day. On the uniquely designed main floor main is the kitchen, butler's kitchen, 4-season room, half-bath, office & guest bdrm/ensuite. Up the solid wood open staircase is the 2nd level/ exquisite master loft with a jaw-dropping W/I closet and ensuite with access to the private patio. Lower level offers 2 bdrms W/I closets/ensuites, rec/theatre area, steam room, wet bar & half bath. Above the heated triple-car garage is the lovely garden suite! Dogs under 25lbs-negotiable. No cats!

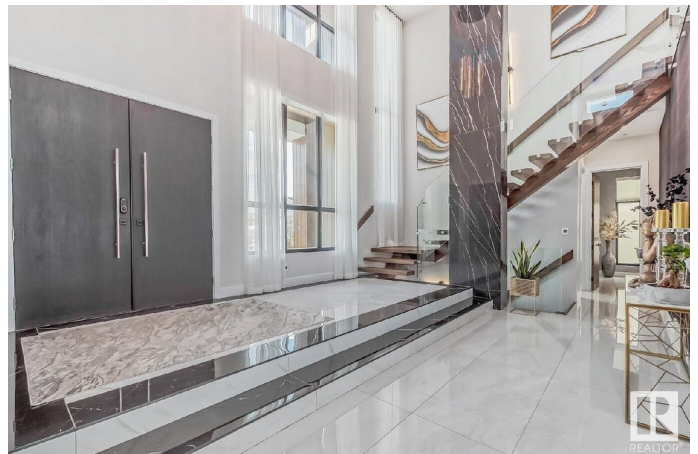
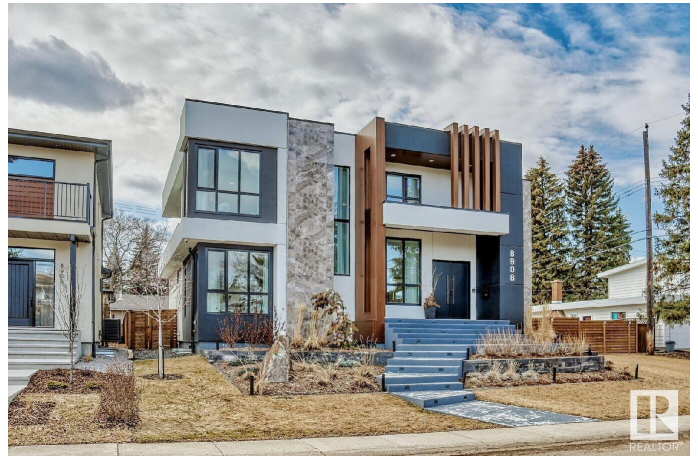
Built in 2020

Essential Information

MLS® # E4415249

Price \$12,500

Bedrooms 5



Bathrooms	6.00
Full Baths	5
Half Baths	2
Square Footage	3,589
Acres	0.00
Year Built	2020
Type	Rental
Style	2 Storey
Status	Active

Community Information

Address	8908 140 Street
Area	Edmonton
Subdivision	Parkview
City	Edmonton
County	ALBERTA
Province	AB
Postal Code	T5R 0J3

Amenities

Parking	Triple Garage Detached
---------	------------------------

Interior

Appliances	Air Conditioning-Central, Dishwasher-Built-In, Dryer, Freezer, Garage Control, Hood Fan, Oven-Built-In, Oven-Microwave, Refrigerator, Stacked Washer/Dryer, Stove-Countertop Gas, Washer, Other
------------	---

Additional Information

Date Listed	December 4th, 2024
Days on Market	150
Zoning	Zone 10

DATA IS DEEMED RELIABLE BUT IS NOT GUARANTEED ACCURATE BY THE REALTORS® ASSOCIATION OF EDMONTON. COPYRIGHT 2025 BY THE REALTORS® ASSOCIATION OF EDMONTON. ALL RIGHTS RESERVED. Trademarks are owned or controlled by the Canadian Real Estate Association (CREA) and identify real estate professionals who are members of CREA (REALTOR®, REALTORS®) and/or the quality of services they provide (MLS®, Multiple Listing Service®)

Listing information last updated on May 3rd, 2025 at 1:02pm MDT