

# **\$650,000 - 104 Mcleod Avenue, Spruce Grove**

MLS® #E4428316

**\$650,000**

0 Bedroom, 0.00 Bathroom,  
Land Commercial on 0.00 Acres

City Centre, Spruce Grove, AB

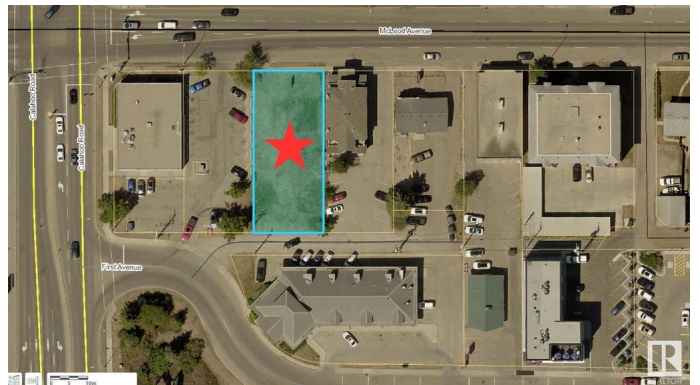
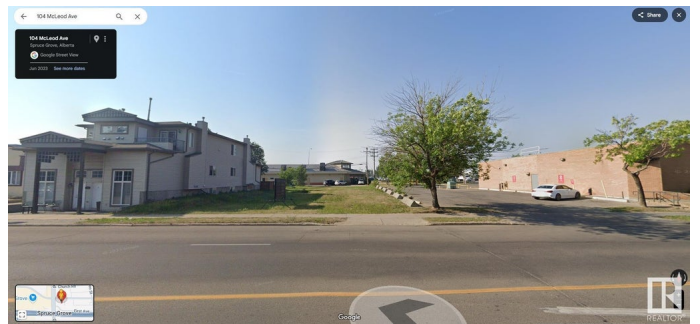
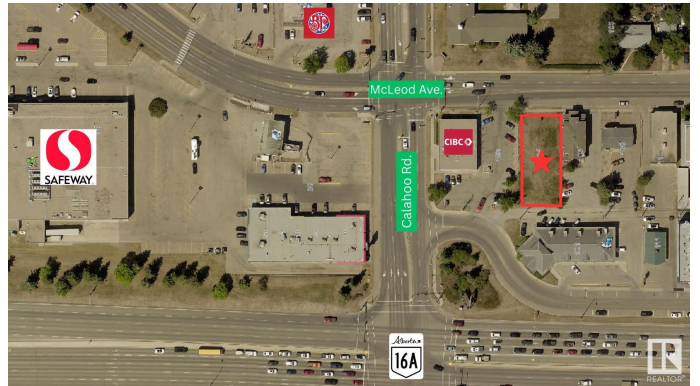
A Prime 8580+/- SF parcel of bare commercial land in the heart of Spruce Grove's bustling City Centre Commercial District on McLeod Avenue. Zoned C1, this lot offers a range of development opportunities including retail, professional services, health services, multi-unit dwelling, live-work dwelling and more. C1 zoning also allows for the development of up to 4 storeys. Priced at \$650,000, this is a rare chance to secure a foothold in a thriving business hub. Perfect for investors or developers looking to make their mark in a high-traffic location, McLeod Avenue sees approximately 8900+/- vehicles per day.

## **Essential Information**

MLS® #	E4428316
Price	\$650,000
Bathrooms	0.00
Acres	0.00
Type	Land Commercial
Status	Active

## **Community Information**

Address	104 Mcleod Avenue
Area	Spruce Grove
Subdivision	City Centre
City	Spruce Grove



County	ALBERTA
Province	AB
Postal Code	T7X 2H8

**Additional Information**

Date Listed	March 28th, 2025
Days on Market	132
Zoning	Zone 91

DATA IS DEEMED RELIABLE BUT IS NOT GUARANTEED ACCURATE BY THE REALTORS® ASSOCIATION OF EDMONTON. COPYRIGHT 2025 BY THE REALTORS® ASSOCIATION OF EDMONTON. ALL RIGHTS RESERVED.Trademarks are owned or controlled by the Canadian Real Estate Association (CREA) and identify real estate professionals who are members of CREA (REALTOR®, REALTORS®) and/or the quality of services they provide (MLS®, Multiple Listing Service®)

Listing information last updated on August 7th, 2025 at 12:17am MDT