

## \$105,000 - 59422 Hwy 44, Rural Westlock County

MLS® #E4437456

**\$105,000**

0 Bedroom, 0.00 Bathroom,  
Land Commercial on 0.00 Acres

None, Rural Westlock County, AB

3.11 acre bare land parcel. Industrial zoning allows for a wide variety of potential development. Municipal services to the ditch (TBC). Located in the Westlock industrial area with quick access from Highway 44.

### Essential Information

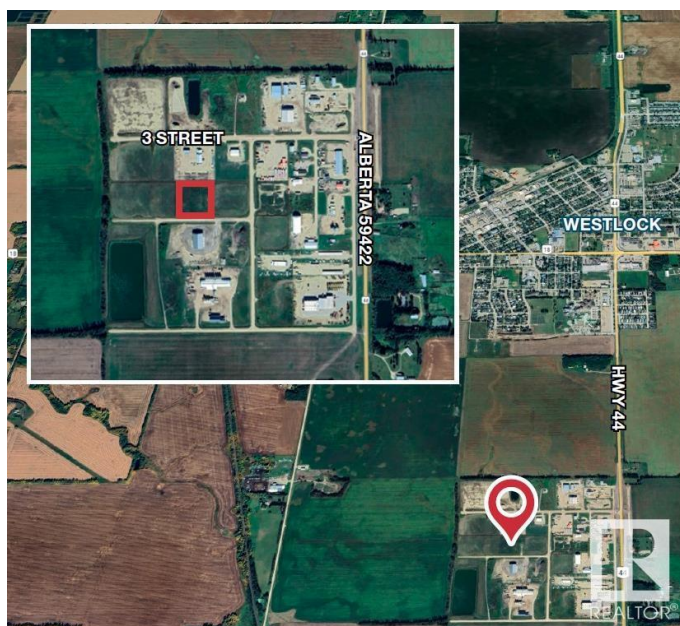
|           |                 |
|-----------|-----------------|
| MLS® #    | E4437456        |
| Price     | \$105,000       |
| Bathrooms | 0.00            |
| Acres     | 0.00            |
| Type      | Land Commercial |
| Status    | Active          |

### Community Information

|             |                       |
|-------------|-----------------------|
| Address     | 59422 Hwy 44          |
| Area        | Rural Westlock County |
| Subdivision | None                  |
| City        | Rural Westlock County |
| County      | ALBERTA               |
| Province    | AB                    |
| Postal Code | T7P 1M7               |

### Additional Information

|                |                |
|----------------|----------------|
| Date Listed    | May 20th, 2025 |
| Days on Market | 27             |
| Zoning         | Zone 70        |



DATA IS DEEMED RELIABLE BUT IS NOT GUARANTEED ACCURATE BY THE REALTORS® ASSOCIATION OF EDMONTON. COPYRIGHT 2025 BY THE REALTORS® ASSOCIATION OF EDMONTON. ALL RIGHTS RESERVED.Trademarks are owned or controlled by the Canadian Real Estate Association (CREA) and identify real estate professionals who are members of CREA (REALTOR®, REALTORS®) and/or the quality of services they provide (MLS®, Multiple Listing Service®)

Listing information last updated on June 16th, 2025 at 6:47am MDT