

Courtesy Of Karen Martin Of Northfield Commercial

\$1,350,000 - 12803 65 Street, Edmonton

MLS® #E4439422

\$1,350,000

0 Bedroom, 0.00 Bathroom,
Multi-Family Commercial on 0.00 Acres

Belvedere, Edmonton, AB

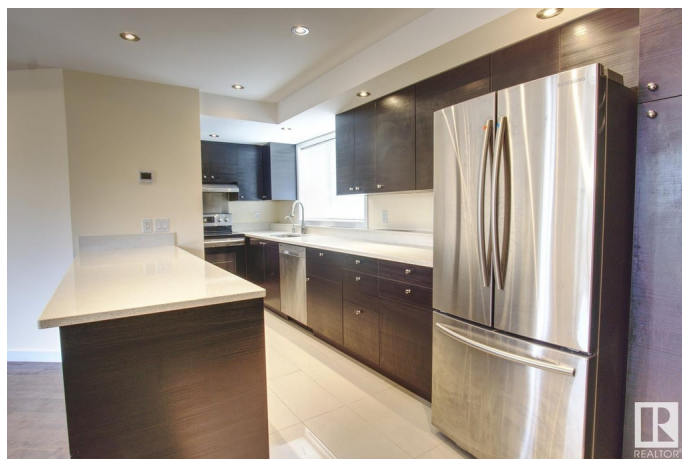
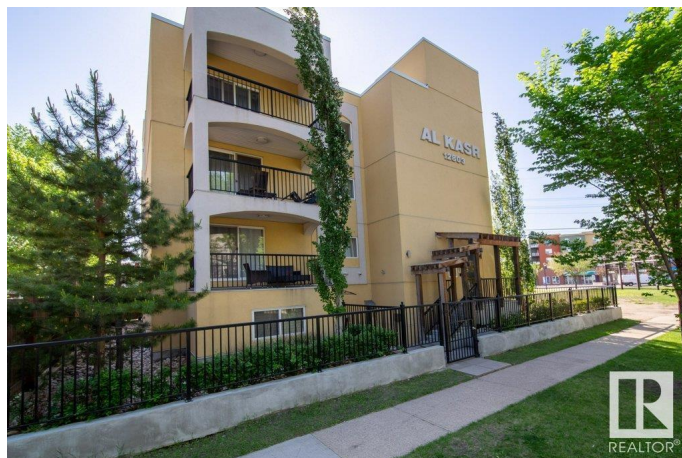
Modern, top quality build-four suites fully tenanted! Above ground, heated parking is one of the many surprises! All suites feature Corian countertops, SS appliances, DW and Laundry. Real hardwood floors, marble inlays, pocelain tiling adorn each home creating a high end, luxury feel. Very appealing as all floorplates are 1300 sq. ft + with the exception of the main floor bachelor. The building is secured with 13 cameras, video intercom, smarthome controls and a keyfob system. The structural and mechanical systems are more than standard - hot water boilers(x2)baseboard heating and heated concrete pad in the parking area. Priced below today's construction costs and totally occupied - act quickly!

Built in 2018

Essential Information

MLS® #	E4439422
Price	\$1,350,000
Bathrooms	0.00
Acres	0.00
Year Built	2018
Type	Multi-Family Commercial
Status	Active

Community Information



Address	12803 65 Street
Area	Edmonton
Subdivision	Belvedere
City	Edmonton
County	ALBERTA
Province	AB
Postal Code	T5A 1L4

Exterior

Exterior	Concrete, Wood Frame, Mixed
Construction	Concrete, Wood Frame, Mixed

Additional Information

Date Listed	May 28th, 2025
Days on Market	24
Zoning	Zone 02

DATA IS DEEMED RELIABLE BUT IS NOT GUARANTEED ACCURATE BY THE REALTORS® ASSOCIATION OF EDMONTON. COPYRIGHT 2025 BY THE REALTORS® ASSOCIATION OF EDMONTON. ALL RIGHTS RESERVED. Trademarks are owned or controlled by the Canadian Real Estate Association (CREA) and identify real estate professionals who are members of CREA (REALTOR®, REALTORS®) and/or the quality of services they provide (MLS®, Multiple Listing Service®)

Listing information last updated on June 21st, 2025 at 5:47am MDT